



The Care First Community
Coalition Presents



ALAMEDA COUNTY BUDGET TRAINING

- ☒ Demystify the budget process!
- ☒ What mental health and housing investments are needed to decarcerate our jail!
- ☒ Fight for a Care First budget that prioritizes people's dignity over punishment!

Saturday June 10th
11am-12:30pm, virtual

RSVP, link in bio
bit.ly/CFCCbdgt

www.carefirstcoalition.org // joy@restoreoakland.org

Care First Community Coalition (CFCC)

Goal 1: Decarcerate Santa Rita Jail, and prevent future criminalization and incarceration of individuals with behavioral health concerns with wrap-around care.

Goal 2: Advocate for a county budget that prioritizes and enables our primary goal. We are committed to implementing the Care First Policy in a community-centered and racially equitable way.



Member Organizations

1. [All of Us Or None](#)
2. [Asian Americans Advancing Justice - Asian Law Caucus](#)
3. [American Friends Service Committee](#) (AFSC)
4. [Behavioral Health Collaborative of Alameda County](#) (BHC)
5. Berkeley Friends Racial Justice Action Team
6. [Community Health Center Network](#) - Alameda Health Consortium
7. [Congregation Beth El](#)
8. [East Bay Supportive Housing Collaborative](#) (EBSHC)
9. [East Bay Housing Organization](#) (EBHO)
10. [Families Advocating for the Seriously Mentally Ill](#) (FASMI)
11. [Interfaith Coalition for Justice in our Jails](#) (ICJJ)
12. [National Alliance on Mental Illness Alameda County](#) (NAMI)
13. [Restore Oakland](#) Inc. (ROI) is CFCC's Backbone Organization



CFCC's Guiding Principles

1. Center racial equity
2. Holistic engagement
3. Healing over Punishment
4. Informed by data and research
5. Divest from carceral institutions,
Invest in community-based
solutions.



What is our community concerned about?

- **Mental illness is stigmatized and invisibilized** → Fear of telling the truth or asking for help
- Gender, class, race and culture all shift people's **access and willingness** to seek care for MH and substance use
- Institutions see 'bad behavior' and not illness → **punishment instead of care**
- **Afraid for unhoused people's wellbeing**
- People with **undiagnosed** SMI, PTSD, anxiety, etc. **don't qualify for services**
- **Terrified for incarcerated family and friends**
- Are people refusing services? If so, why?
- **Why is it so hard to find MH resources?**
- We have **no long-term MH care** options available in Alameda County
- **"You don't know what you need"** - People with mental illness or substance use issues aren't included in creating recovery plans
- Our current system leaves undocumented people, queer and trans folks, BIPOC, poor folks, domestic laborers, elders, teens, unhoused people, drug users, caregivers and incarcerated people all **vulnerable and unseen**

Top 5 Priorities

1. **Divest from \$80M Santa Rita Jail expansion**
2. **Invest \$171M in House Keys Not Handcuffs**
3. **Jail diversion now**
4. **Gather data to measure unmet needs and service gaps**
5. **Democratize the budget process and make it more transparent**



Photo by Brooke Anderson | @movementphotographer

Solidarity Breakouts

*We build power through
relationships!*

Breakout for 10 minutes

What brings you here?

Bring your community to mind: your family, your neighborhood, the people you live, work and love with. What are the stories, questions, or fears that your community holds around the idea of mental illness or substance use disorders?

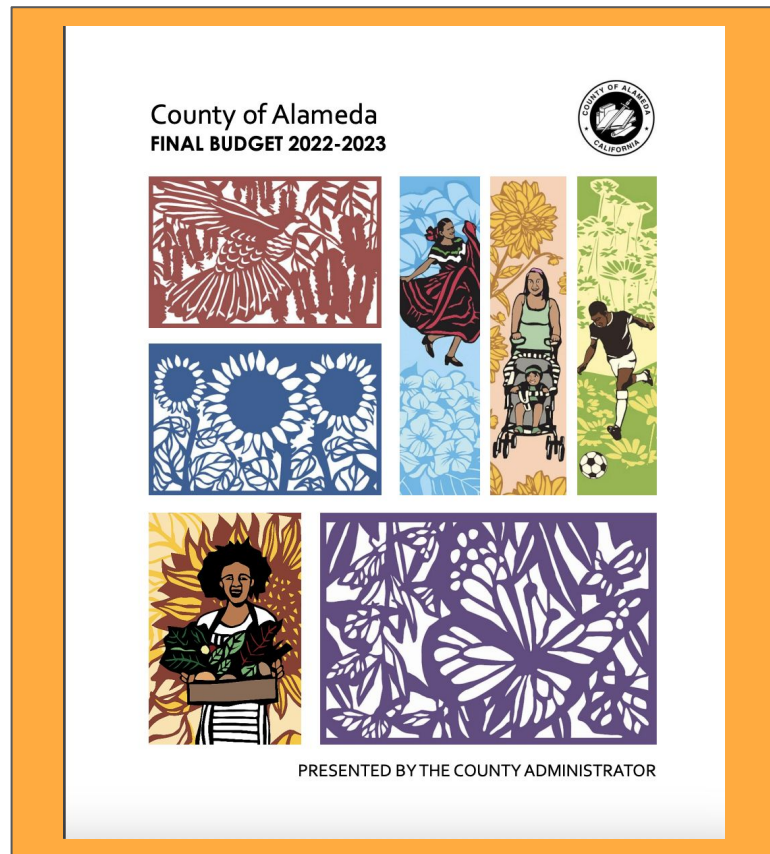
What is a budget?

A budget outlines how much income and spending a government is anticipating in a given year.

Think of a budget like a roadmap: Alameda County will determine its priorities through how much it allocates for a department to operate.

It is both a guide and a process.

You can find the Alameda County budget at:
<https://budget.acgov.org/Home/Documents>



The budget is more than dollars and cents



The Problem: What's going on in Alameda County?

*Systemic Under-investment in Mental Health & Housing
Coupled with Increased Criminalization*

5 Deaths in 2023, 67 deaths since 2014



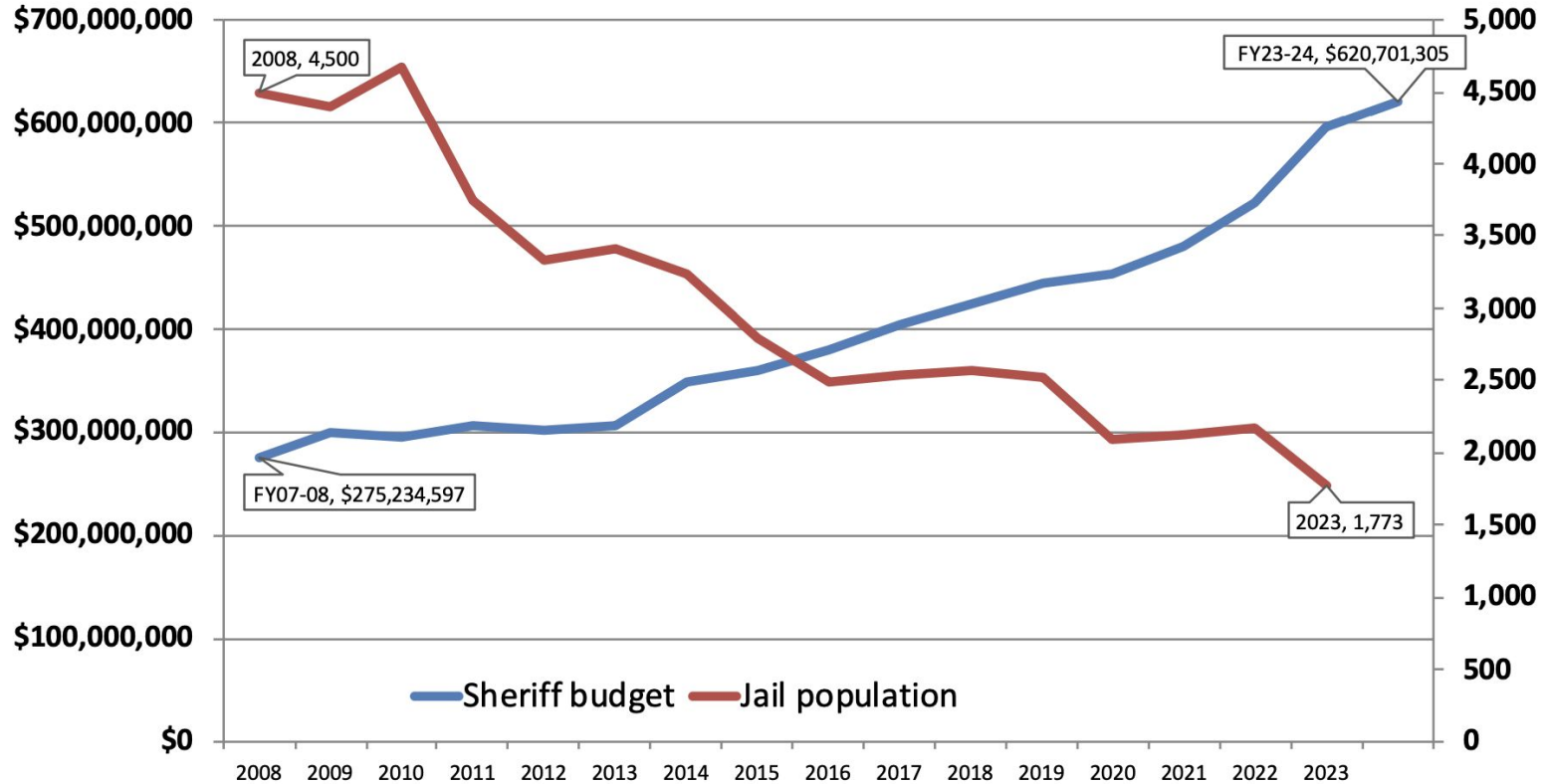
Crisis of Homelessness + Mental Health + Criminalization

Count of Unsheltered/Sheltered
Individuals for Alameda County



At least **48% of unsheltered people** have a **mental health condition and/or a history of criminalization**

Alameda Co Sheriff Budget vs Jail Population, 2008-2023



Alameda County has approved an \$80 million jail expansion



Planning to build a 38,000 sq. foot [“Mental Health Program & Services Unit”](#) to for 107 new jail staff.

- In 2015, County received \$54M state grant, original total was \$61M.
 - County was going to spend \$7M
- Now the jail expansion cost is \$81M and county is willing to spend \$26.6M
- Does not include annual operating costs

How should we assess potential pitfalls of reform?

1. The solution provides no material relief to our loved ones

Ex. Housing solutions that don't serve people with "criminal record" or their families.

2. The relief only reaches the least marginalized

Ex. [Behavioral Health Court's](#) eligibility criteria is restrictive and prioritizes lower level offenses

3. It only changes the window dressing and legitimizes the harmful system

Ex. [Babu lawsuit](#) claims that Sheriff's Office fails to provide adequate mental health care, resulting \$106M/year more into staff at the jail.

4. It expands the reach and/or adds resources to harmful systems

Ex. \$80M jail expansion to resource mental health care inside the jail

5. It pits people against each other – "deserving" and "undeserving" narratives

Ex. People with serious behavioral health disorders don't often get the care they need until they have been in repeated crisis, often resulting in homelessness, hospitalization, and incarceration.

Problem Takeaways

Alameda County residents continue to experience crisis and criminalization because the County Budget does not prioritize community care.

1. At a time when the incarcerated population of Santa Rita Jail is decreasing, and housing insecurity is worsening, Alameda County continues to pour money into the Sheriff's Office and deadly jail complex.
2. It is now proposing a multi-million dollar jail expansion – while it refuses to dedicate sufficient funding to addressing mental health and substance use crises, poverty and homelessness, and other public health emergencies.

Money isn't the problem: We know our County can find the funds to meet our needs, so **we must organize and mobilize to create the political will!**

Budget Deep Dive

Alameda County Budget Players



Taxpayers & Residents... US!

Who influences the budget?



District 1

David Haubert
Vice President



District 2

Elisa Márquez



District 3

Lena Tam



District 4

Nate Miley
President



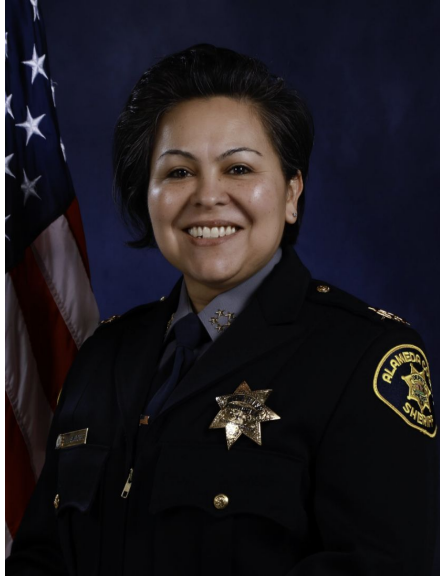
District 5

Keith Carson

Alameda County Board of Supervisors (elected)

Find your County Supervisor: <http://www.acgov.org/ms/addresslookup/Default.aspx>

Key Agency Directors



Sheriff
(Newly Elected)
Yesenia Sanchez



District Attorney
(Newly Elected)
Pamela Price



Healthcare Services
Agency (HCSA)
(Appointed)
Colleen Chawla



Behavioral Health
(ACBH) (Appointed)
Dr. Karyn Tribble

Who leads the budget process?



Susan Muranishi
Alameda County
Administrator
(appointed in 1995)

County Departments

Health Care Services

Health Care Services Agency

- Behavioral Health Dept.
- Public Health Dept.
- Environmental Health

Public Assistance

Social Services Agency

Child Support Services

General Government

General Services Agency

Community Development Agency

General Government (continued)

Human Resource Services

Registrar of Voters

Assessor

Treasurer-Tax Collector

Auditor-Controller

Library

Public Works Agency

Information Technology Department

Public Protection

Sheriff

Probation

Public Defender

District Attorney

Fire Department

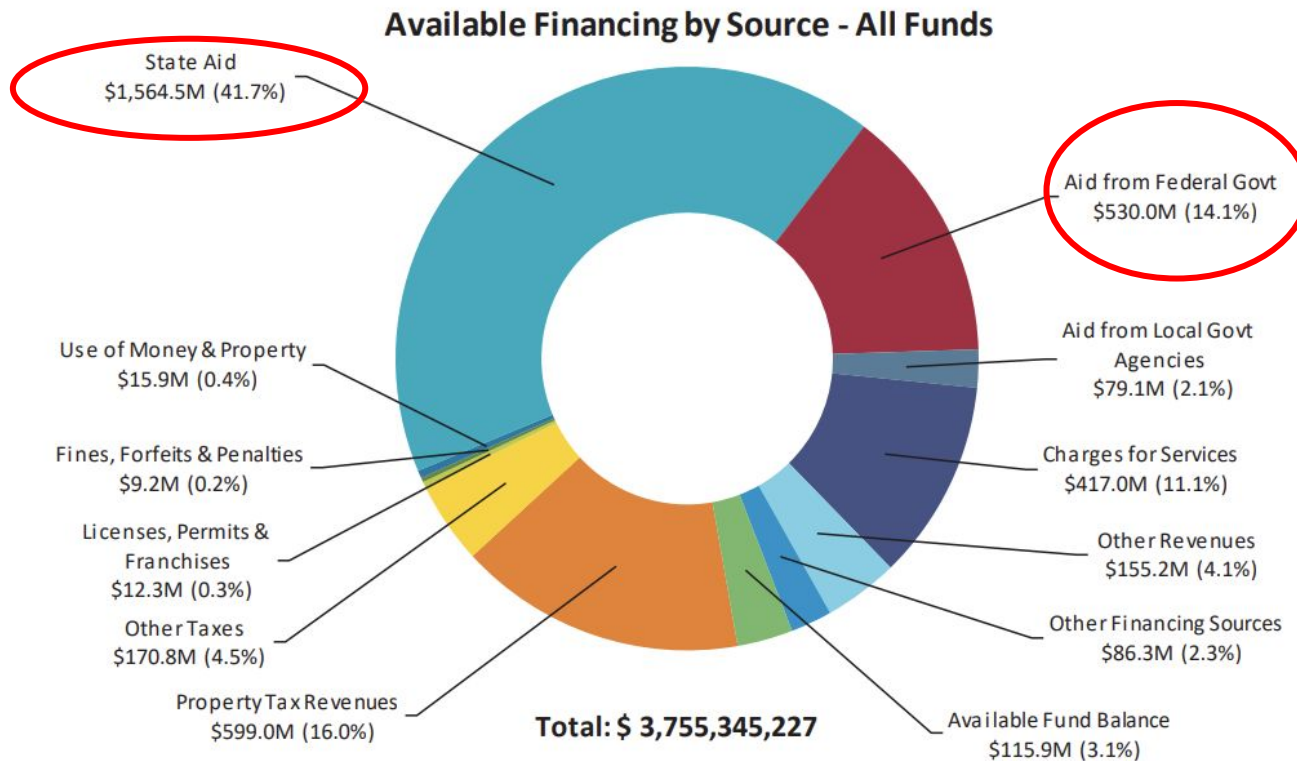
Trial Courts

The Problems about Transparency and Data

Alameda County:

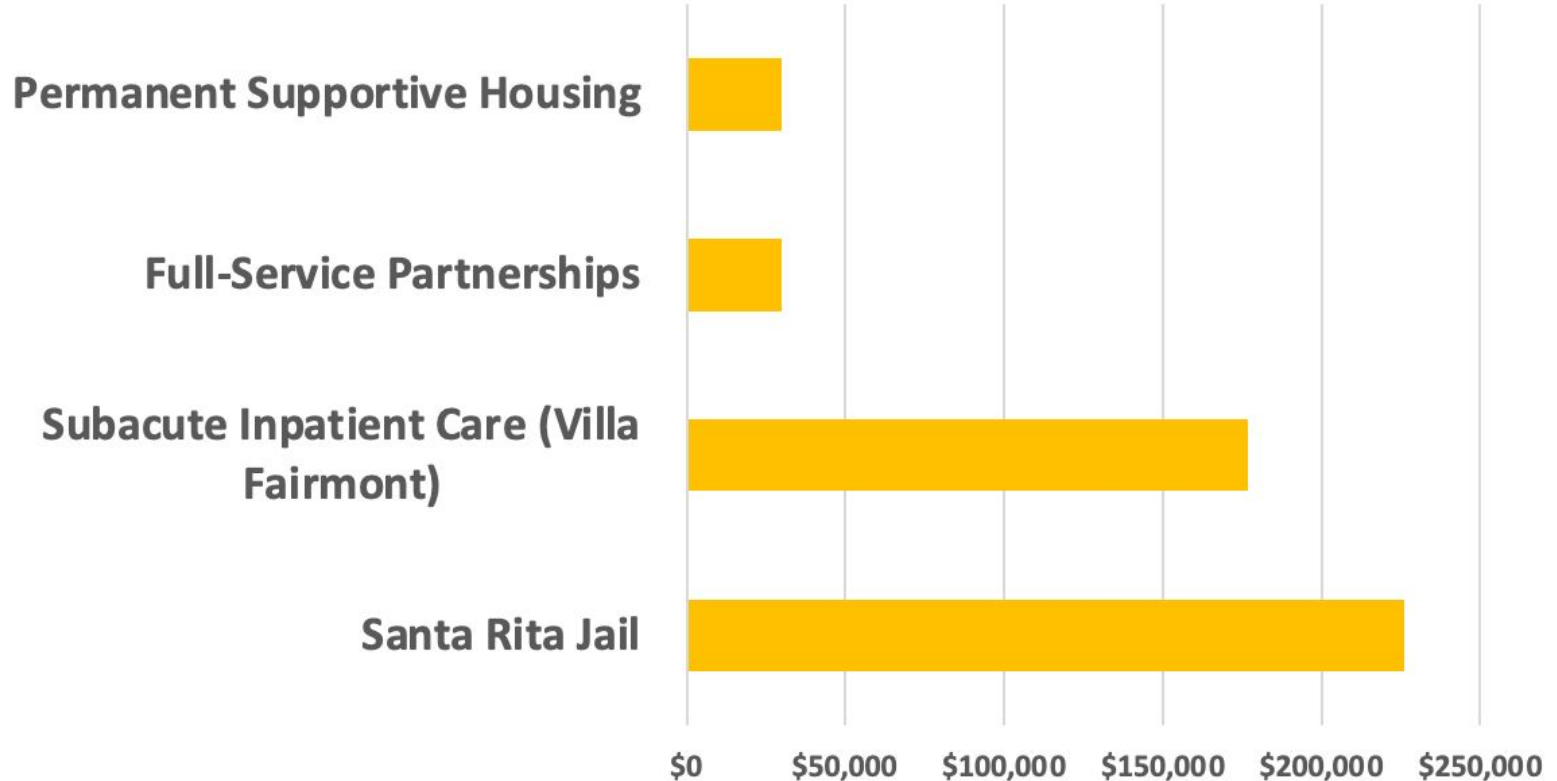
- **Doesn't assess unmet needs** for behavioral health: People needing support for mental health, substance use, diversion and not getting it
- **Doesn't engage county residents** about budget issues & decisions
- **Gives almost no public notice** about its annual budget and budget hearings
- **Does not publish** the amount of its unrestricted reserves
- **Doesn't disclose** how much of jail budget is unspent or how it's used

State & Federal Funding is Critical to Alameda County

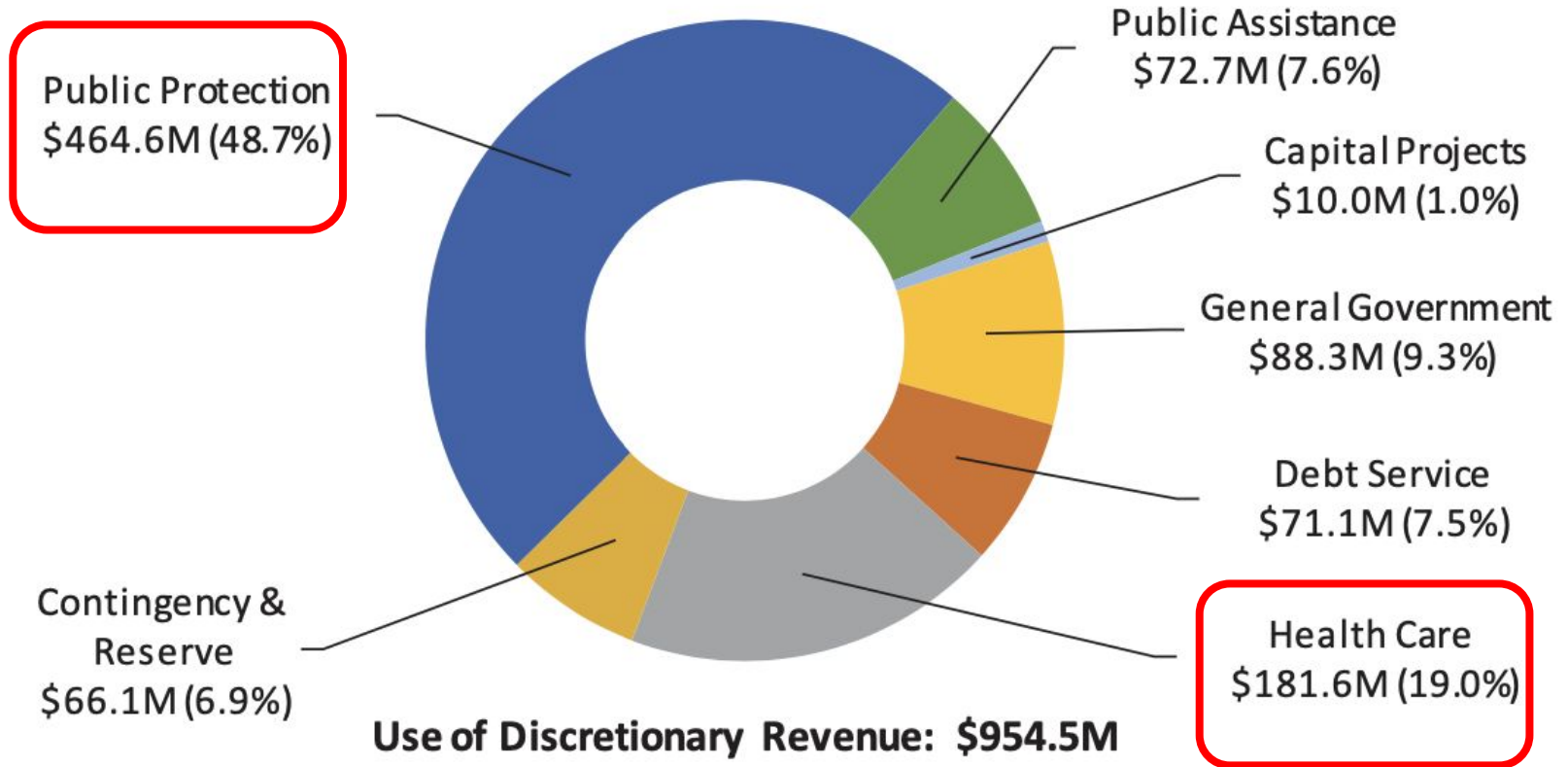


Alameda County 2022-23 Budget

Cost of Community Prevention & Treatment vs. Incarceration / person-year

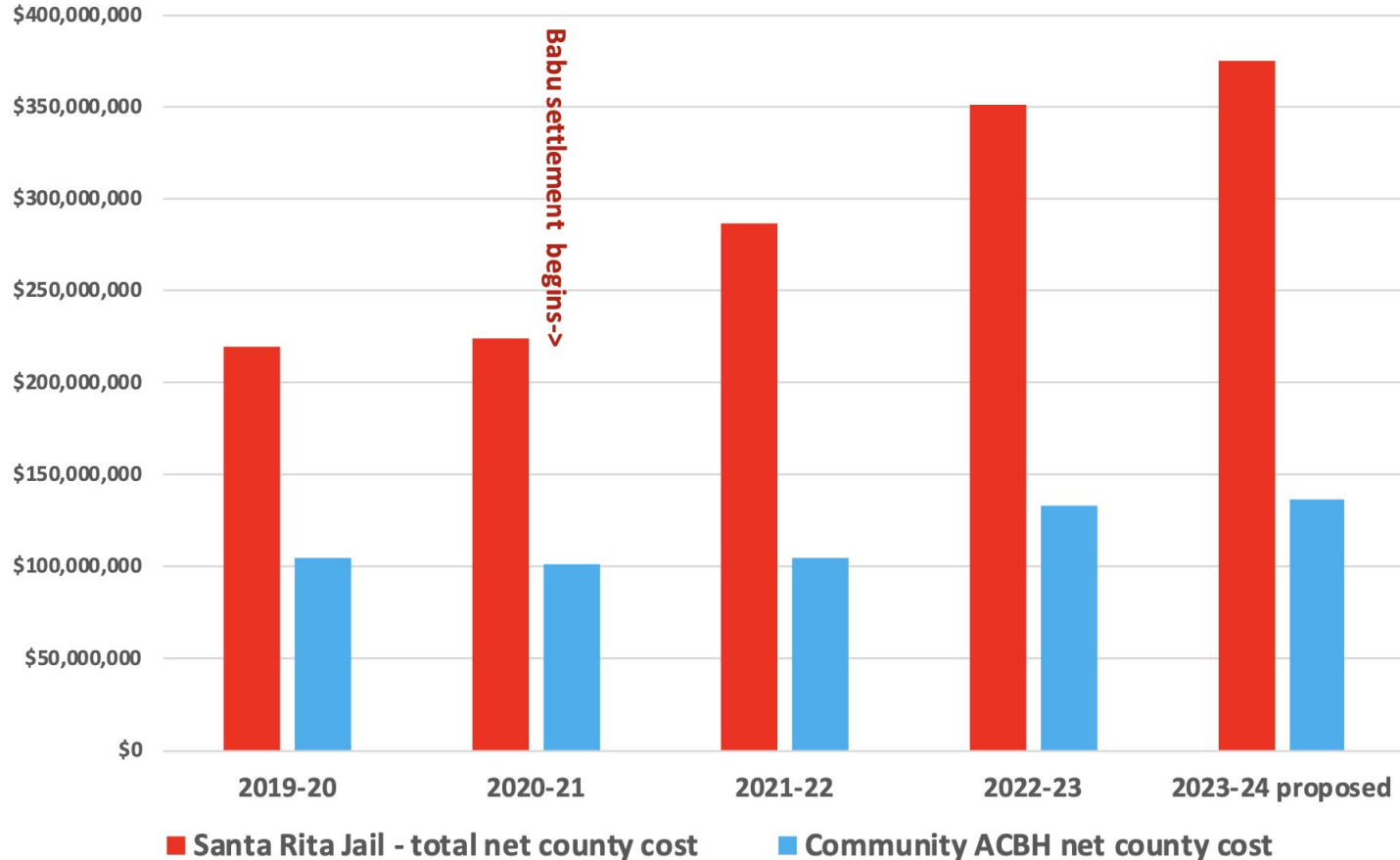


Use of Discretionary Revenue by Program



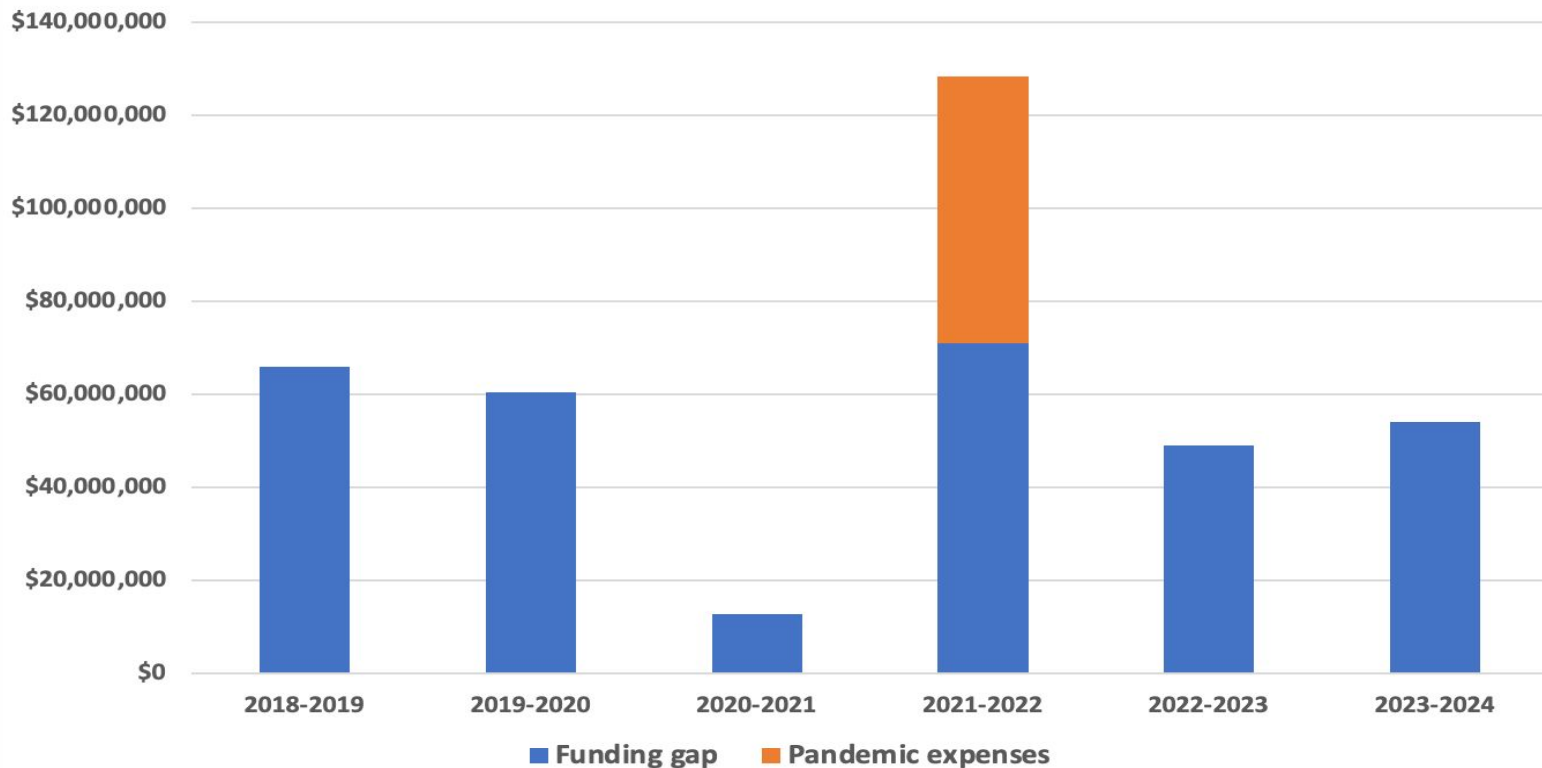
Santa Rita Jail v Community Behavioral Health

Budget for Net County Costs



Alameda County Funding Gaps Stable, Despite Growing Jail Costs

*County departments propose budgets; CAO identifies funding gaps
Despite expense increases, funding gap didn't increase*



Budget Timeline

- 1. January - County departments draft budgets**
- 2. April - Early budget hearing**
- 3. June ? - CAO submits Proposed 23-24 Budget**
- 4. June 26 - Budget Hearings**
- 5. June 27 - Budget Deliberations**
- 6. June 29 - Final Budget Adoption**

Budget Takeaways

Right now, our county budget...

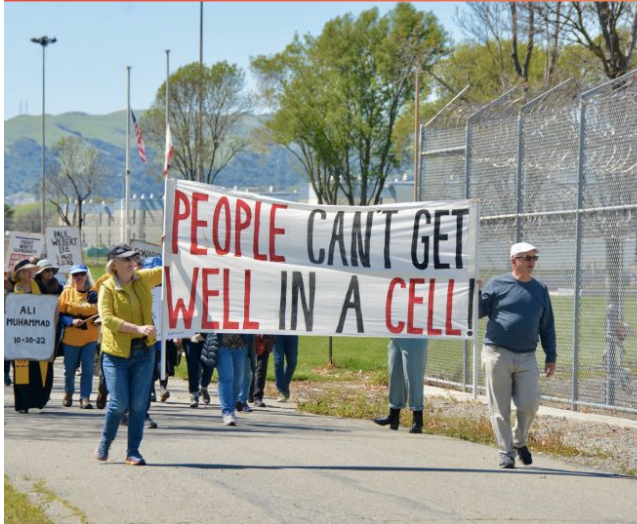
1. Does **not prioritize** our community's most urgent needs: housing, healthcare, and life-affirming resources for our most marginalized community members
2. Has allocated over **2.5x more** in overall funding on public protections and jail than on behavioral health services
3. Is led by the CAO and is negotiated through a process that has been largely **inaccessible to County residents**, which means our tax dollars are being spent without our consent

We demand...

A county budget that **funds our community's care, healing, and stability** – a budget that is **on time, for the people, by the people!**

Care First Solutions
We're Fighting For

Care First Community Coalition Budget Platform



2023-2024

Care First Wins

1. Care First policy adopted May 2021
2. Care First Jails Last has been most debated issue County budget deliberations
3. Commitment to identify funding for \$50M in Behavioral Health's "Forensic Plan"
4. \$2M to purchase 27 subacute beds available at Villa Fairmont that are currently leased out to neighboring counties or Kaiser.
5. Commitment to identify funds for additional Full Service Partnerships

Data and Budget Transparency Proposals

Wrote a Board motion for Sup. Haubert & Tam, will be introduced this month:

1. Post budget agenda and materials at least 7 days in advance of budget meetings
2. Annual reporting on County's unrestricted reserves and fund balances
3. Budget report on jail spending
 - a. Staffing and Overtime
 - b. Unspent funds
 - c. Sources of funds
4. Budget report on annual county grant from the state called Realignment (AB109)
 - a. How and where funds were spent

Invest \$200k to conduct service gap analysis to understand unmet behavioral health need

Assess and evaluate the causes of staff shortages and outcomes of efforts to recruit and retain behavioral health line staff

Investments that Strategically Expand Care (\$171M)

- 1. \$80M to build additional Supportive Housing units**
- 2. \$43M to fully fund Behavioral Health Dept.'s Forensic Plan**
- 3. \$25.5M for Full Service Partnerships, wrap around services for people w/ severe mental illness**
- 4. \$7.7M for 1 additional voluntary residential crisis center, aka Amber House**
- 5. \$6M to increase pay of behavioral health community-based organization line staff**
- 6. \$2M to make existing county mobile crisis teams run 24/7 (CATT and MET)**

Invest \$17M to Maintain Current Level of Care

We are in a behavioral health workforce crisis!

\$17 million a year would help to retain the staff that are currently hired to do critical care work.



**Stop the Loss of Staff for Mental Health
and Substance Use Disorder Services**

Invest \$25.5M to double number of people served by Full Service Partnerships (FSPs)

FSP is an intensive service designed for people with severe mental illness (SMI) with a “**whatever it takes**” philosophy to help individuals on their path to recovery and wellness.

Today, Alameda County has ~1,000 FSP slots

But US Department of Justice cited a **need for Full Service Partnerships (FSPs) of 4,000 to 6,000 people in Alameda County**



\$43M to fully fund Alameda County Behavioral Health Department's countywide Forensic Plan

- a. \$6.6M for 6 mobile crisis teams
- b. \$2.2M for crisis 24-hour dispatch service
- c. \$16.5M to expand voluntary residential treatment beds countywide
- d. \$2.2M for new board & care facilities
- e. \$1.05M for facility for co-occurring mental illness/substance treatment
- f. \$9.5M for hospital beds (25-bed subacute facility, 16-bed acute facility)
- g. \$2M to expand satellite urgent care clinic services
- h. \$1.08M for re-entry support teams
- i. \$1M for peer respite for persons from Santa Rita Jail, on probation, at risk

Housing First Framework

Typical “Housing Readiness”



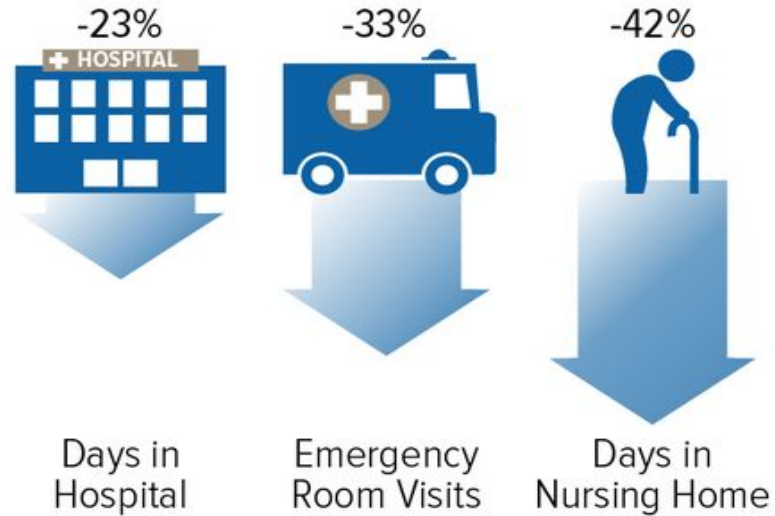
Housing First



Invest \$80M of county funds towards permanent supportive housing programs and services

Supportive Housing Can Produce Health Care Savings

Combining affordable housing with intensive services for a high-needs group saved an average of over \$6,000 a year per person in health care



CENTER ON BUDGET AND POLICY PRIORITIES | CBPP.ORG

\$80 million would affirm that housing is a human right when the Bay Area is facing a housing crisis and extreme wealth inequality

How do we influence budget decisions?

1. **Influence media and change the narrative**
 - a. Publish op-eds, write letters to the editor, create social media content (memes, videos), re-share positive stories
2. **Call and email your county supervisor**
3. **Make your voice heard through public comment**
4. **Grow the coalition and movement for decarceration**
 - a. Labor unions, health care workers, faith communities, neighborhood groups, youth groups, trade associations, etc.
5. **Build relationships with county supervisors and agencies**
6. **Take direct action**



Throw Down With Us!

CARE FIRST WAKE UP CALL!

Tuesday June 13 @ 9am

Alameda County Administration Building
1221 Oak St. Oakland, CA

**Rally to Demand
House Keys NOT Handcuffs
Care NOT Cages**



- ❑ **Wake Up Call Action on June 13 at 9 am**
- ❑ **Review and endorse our Budget Platform**
- ❑ **Use our toolkit to email the county**
- ❑ **Attend Budget Hearings (June 26, 27, 28, 29)**

**Look out for our Budget Season Co-Learning Session in July*



www.carefirstcoalition.org



Thank You So Much!

www.carefirstcoalition.org // Insta: @FreeSRJ